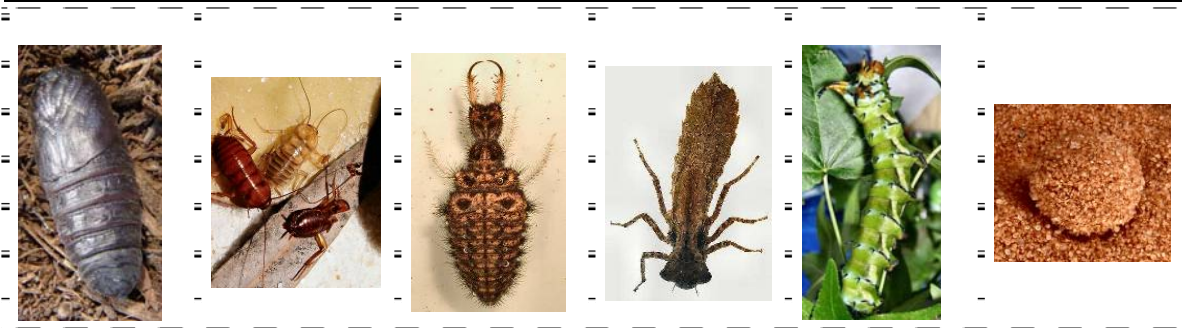


Name: _____




Comparing Incomplete Metamorphosis to Complete Metamorphosis

**Cut out the pictures of the nymphs, larva, pupa, and cocoon below.
Paste them next to the correct adult.**

| | | | |
|------------|--------------|---------------|------------------------|
| Egg | Nymph | | Cockroach |
| Egg | Nymph | | Dragonfly Adult |
| Egg | Larva | Pupa | Regal Moth |
| Egg | Larva | Cocoon | Antlion Adult |



Answer Key
Comparing Incomplete Metamorphosis
to Complete Metamorphosis

| | | | |
|--|---|---|--|
| <p>Cut out the pictures of the nymphs, larva, pupa, and cocoon below.</p> <p>Paste them next to the correct adult.</p> | | | |
| <p>→ Egg</p> |  Nymph | |  Cockroach |
| <p>→ Egg</p> |  Nymph | |  Dragonfly Adult |
| <p>→ Egg</p> |  Larva |  Pupa |  Regal Moth |
| <p>→ Egg</p> |  Larva |  Cocoon |  Antlion Adult |